

# Whole Education



# Whole Education Network

## West Midlands Hub Launch

Tuesday 27th June 2017 - 12:30-14:00

---

Prince Albert Primary School  
Albert Road  
Aston  
Birmingham  
West Midlands  
B6 5NH

### Overview

---

The Whole Education Network is a group of over 200 schools all committed to providing values-led, research-informed and impact-focused education for children and young people that:

- + helps develop a range of skills, qualities and knowledge
- + makes learning more relevant and engaging, with young people owning their own learning
- + supports learning across various settings, not just the classroom

Schools in the national network share this vision and values and are committed to learning from and with each other.

Whole Education is continuing to grow in size and influence at a regional and national level. This meeting, supported by Victoria Academies Trust and Prince Albert Community Trust, is an opportunity for schools, MATs and TSAs to learn more about how the network can help drive the 5i's for your school, MAT or TSA.

---

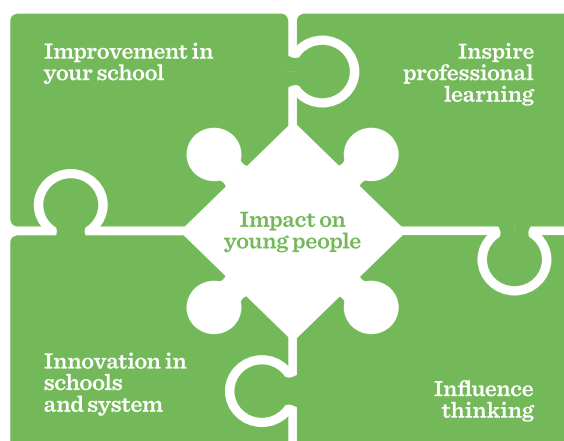
### You will:

- + learn more about deeper professional learning initiatives including Spirals of Enquiry (pioneered in British Columbia) and the use of technology to build a learning culture within your school
- + Funded pilots and projects on flipped learning, mental health and well being and curriculum development
- + connect with like-minded peers committed to whole education values



### Whole Education Network 5 i's model

---



# Whole Education



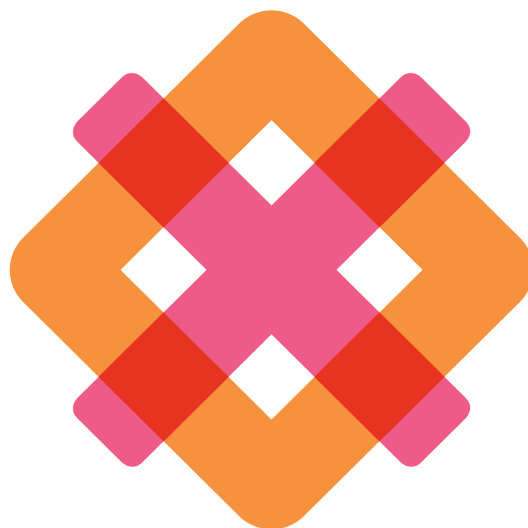
## Agenda

---

- 12:30 — *Networking over lunch*
- 13:00 — *Introduction to Whole Education Network model and how it supports innovation, professional learning and improvement at school, MAT or TSA level*
- 13:25 — *Deep dive into projects, pilots and other initiatives*
- 13:45 — *Plenary discussion*
- 14:00 — *Close*

*“The network provides a catalyst for quality reflection and discussion between staff and colleagues across the country.”*

Primary Headteacher



Cost and Bookings	Audience
Cost   Free	+ Primary School Leaders
Booking   To book your place or for more information contact <a href="mailto:natasa@wholeeducation.org">natasa@wholeeducation.org</a>	+ Secondary School Leaders
	+ Leaders of MATs or TSAs